



INDUSTRIAL HYGIENE

SAMPLING  
SOLUTIONS

**MEGA SYSTEM**

CALIBRATION  
& METROLOGY

# LIFE ONE SERIES



- Environmental sampler
- Constant flow rate
- Battery powered
- Reduced size and weight



CARE FOR THE  
ENVIRONMENT



# LIFE ONE SERIES

LIFE ONE is an easy to program sampler, thanks to its polycarbonate keypad and large LCD display for viewing set and stored data.

Practical and lightweight, it can be used on power mains or the LIFE ONE BATTERY version, with rechargeable batteries, can be used for sampling in off-grid areas.

The electronic flow regulation system with automatic compensation for sensor load loss allows for sampling at constant flow rates.

Sampling parameters are always available on the display and at the conclusion of sampling they are stored in the final summary, which also includes the normalized volume calculations.

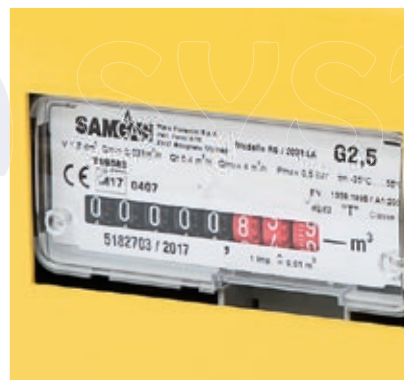
The instrument is equipped with a buffer battery that allows the active program to be paused in the case of a power failure.

When the power comes back on, the instrument is able to automatically resume sampling and records the event in the final summary.



## MAIN FEATURES

- Constant flow rate with automatic compensation of load losses.
- Digital flow setting and adjustment using the keyboard (even during sampling).
- Recording and display of temperature and sampled volume.
- Signaling, archiving and management of alarms.
- Archiving for data storage related to the last sampling carried out.
- "Buffer" battery to restart the sampler in the case of power failure and record the event itself.
- The instrument comes complete with a test report.



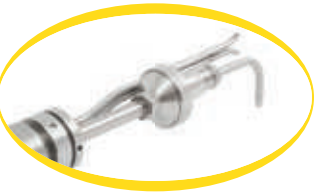
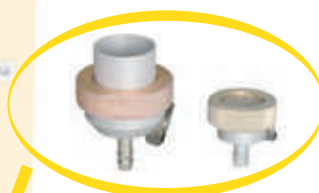
MEGA

## SOFTWARE FEATURES

Environmental sampling at constant flow in accordance with European regulations.

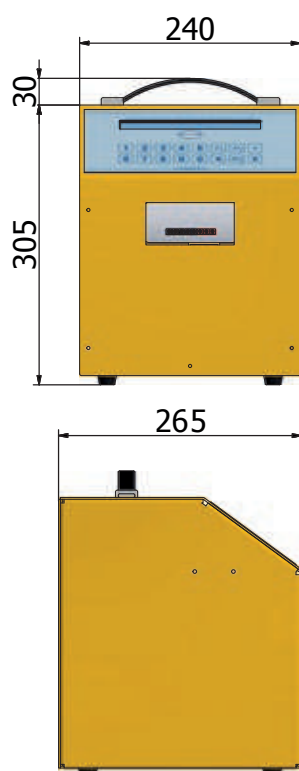
### Sampling mode:

- Timed with sampling duration setting.
- Volumetric with setting of the volume to be sampled.
- Delayed start.



# LIFE ONE SERIES

## LIFE ONE



## TECHNICAL SPECIFICATIONS

### Performance

Type of pump	Membrane - single head from 1,8 m <sup>3</sup> /h
Free air vent flow rate	> 30 l/min
Maximum vacuum	> 600 mmHg
Operating range	1 ÷ 25 l/min
Volumetric Meter /Resolution /Accuracy	G 2,5 / 0,2 l / ± 2%
Sampling time	Uncertainty < 30 sec / gg

### Interface, Data Archiving

Display	Alphanumeric LCD (40x2)
Interface	Usb Host (on Pen Drive)

### Environmental Conditions

Working Temperature Range	0 °C ÷ 45 °C - 95% UR
---------------------------	-----------------------

### Energy

Power	230 Vac - 50 Hz External battery 12 Vcc (not included)
Consumption	110 W

### Features

Weight	7 kg
--------	------

### Options

External battery box	✓
----------------------	---

### Supplied With

Technical Manual	
Test report	

### Temperature Sensors

Meter	Digital
Range	0 ÷ 50 °C
Resolution	0,1 °C
Accuracy	± 2 °C

# MEGA SYSTEM