

## ODOUR SAMPLING ACCESSORIES



- Static Hood
- Fluxbox
- Low Speed Tunnel

Odour Sampling Accessories\_REV000 ENG\_04/2025



# STATIC HOOD

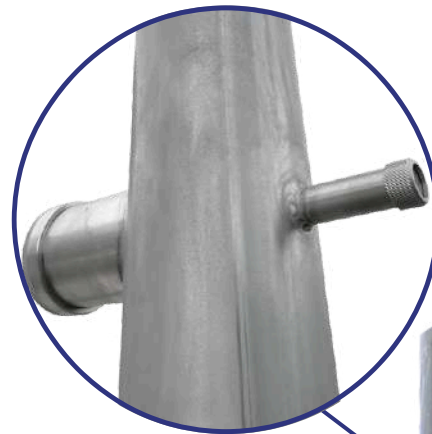
Thanks to years of experience in the field, Mega System is able to create tailor-made projects for every need and in a short time, always in compliance with the relevant regulations.

One of our latest projects is the **STATIC HOOD**: a device for air conveyance from active aerial sources (biofilters).

The hood consists of:

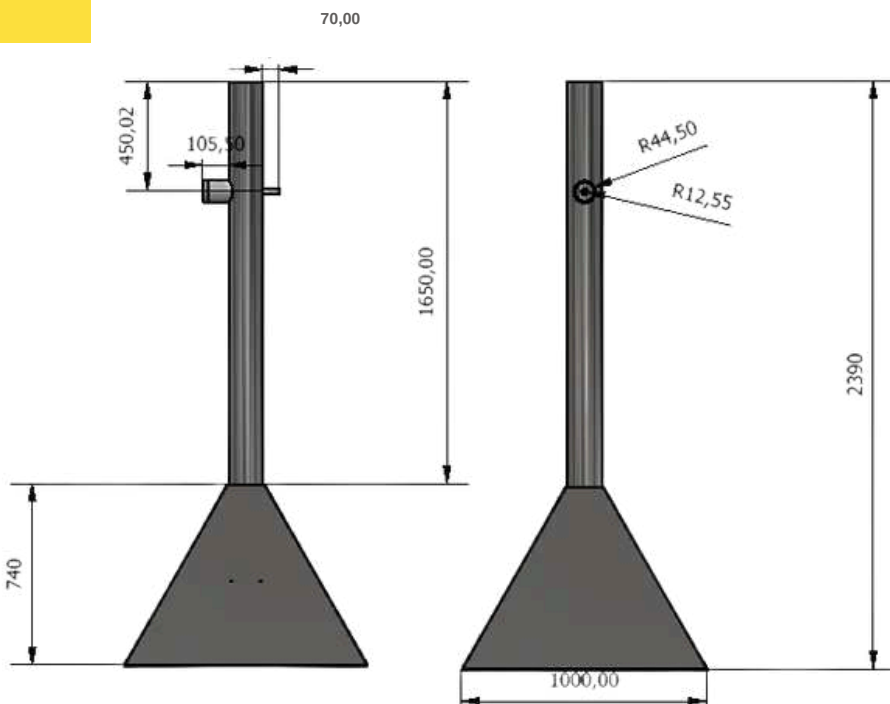
- A **square-based stainless steel hood**, an inert material in terms of odor generation.
- An **accelerator chimney** with a known diameter, having an outlet section with nozzles for environmental parameter verification and sample collection

## TECHICAL FEATURES



• GENERAL FEATURES		
Dimensions	Square section (S1)	Circle section (S2)
	1 m <sup>2</sup>	0,0145 m <sup>2</sup>
Weight	40 Kg	
Material	Stainless Steel	

## STATIC HOOD



# FLUXBOX

The **FLUXBOX** system enables the monitoring of various diffuse gas emissions such as biogas, toxic gases (H<sub>2</sub>S, NH<sub>3</sub>, H<sub>2</sub>, etc.), and VOCs at contaminated sites.

The system is designed in compliance with the UK guidelines on monitoring diffuse emissions (**Guidance on monitoring landfill gas surface emissions, LFTGN 07**).

## MAIN FEATURES

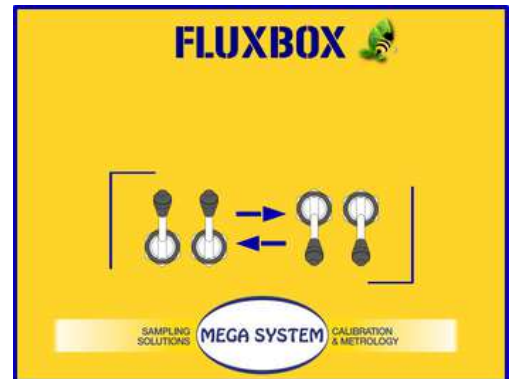
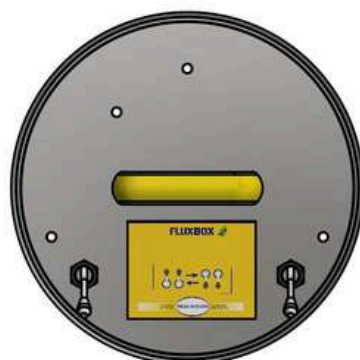
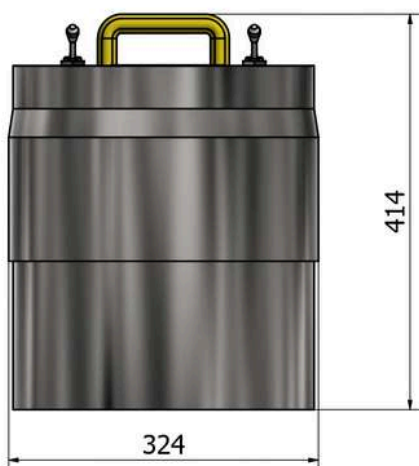
- Variable-volume sampling chamber
- Manual switch valves to facilitate zeroing and calibration of the detector connected to the probe

## SPECIFICHE TECNICHE

### • GENERAL FEATURES

Dimensions	324 x 414 mm
Weight	5 Kg
Volume	21 L
Contact surface	784 cm <sup>2</sup>

## FLUXBOX

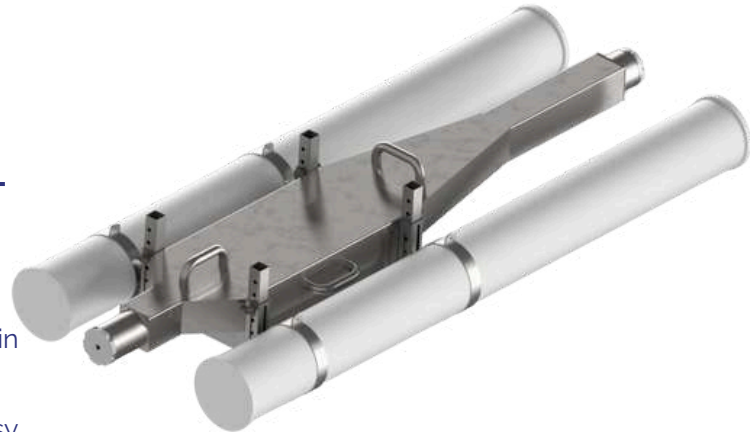


# LOW SPEED TUNNEL

By simulating the natural action of wind over liquid and/or solid surfaces, the **LOW SPEED TUNNEL** is used to capture and analyze odour emissions from passive sources, both liquid (landfills, wastewater treatment tanks) and solid (sludge).

## MAIN FEATURES

- Compliant with DGR 3018/2012
- Made of durable AISI 316 stainless steel, in accordance with EN 13725
- Quick-connect fittings on inlet/outlet lids for easy connection of incoming carrier gas lines and outgoing sampling lines
- Height-adjustable floats for use on liquid emission sources



## TECHNICAL FEATURES

### • GENERAL FEATURES

Dimensions	253 x 150 x 1600 mm (length without floats)
Weight	18 Kg
Flow	1-10 cm/s (DGR 3018/2012)



## LOW SPEED TUNNEL

